

Swing Check Valve

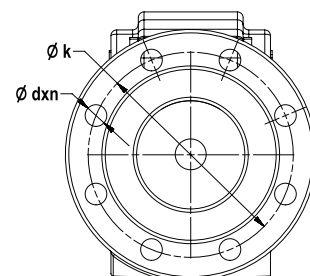
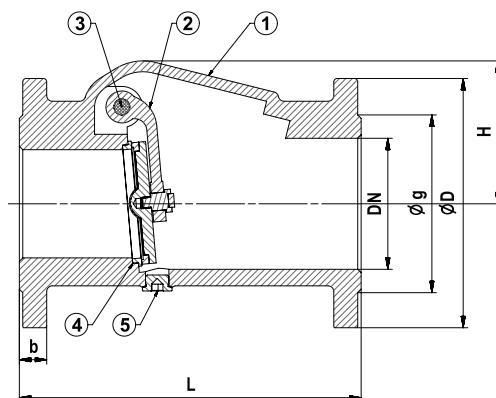


Data sheet 2622 SCV, Issue 0317 ME

Materials

Body	(1) GG25
Disc	(2) GGG40
Stem	(3) Stainless steel
Seats	(4) Brass CW617N
Plug	(5) Steel St37

Dimensions in mm



Order number		4 2622 21	4 2622 22	4 2622 23	4 2622 24	4 2622 25	4 2622 26	4 2622 27	4 2622 28	4 2622 29	4 2622 30
DN	mm	65	80	100	125	150	200	250	300	350	400
L	mm	240	260	300	350	400	500	600	700	800	914
H	mm	87	104	125	157	186	240	295	372	375	438
D	mm	185	200	220	250	285	340	405	460	520	580
k	mm	145	160	180	210	140	295	355	410	470	525
g	mm	118	132	156	184	211	266	319	370	420	480
b	mm	20	22	24	26	26	20	22	25	36	40
d	mm	19	19	19	19	23	23	28	28	28	30
n		4	8	8	8	8	12	12	12	16	16
Weight	kg	10.5	14	20	30	43	70	120	164	215	272

Specification

Temperature range	: -10°C ... +110°C
Pressure rate	: PN16
Flange Dimensions	: according to EN1092-2
Design standard	: EN 12334
Coating	: painted blue RAL5000



For hot and cold water systems for fluids excluding acid and flammable fluids.
The use of ethylene or propylene glycol in the mixing ratio of 25-50% is allowed.

kvs values

DN	65	80	100	125	150	200	250	300	350	400
Kvs	117	182	292	465	680	1230	1950	3077	3480	3724

Pressure loss calculation

The pressure loss in the valve can be calculated with below given formula.

$$1. \Delta p = \frac{\zeta \cdot c^2}{2g}$$

$$2. \Delta p = \frac{\gamma \cdot h_v}{\zeta} = \frac{\gamma \cdot c^2}{2g}$$

Δp pressure loss (m)
 Δp pressure loss (kp/m² = mmSS)
 c flow rate (m/s)
 ζ pressure loss coefficient
 γ density (kp/m²)
 g 9.81 m/s²

All specifications and information within this document are reflecting the information available at the time of going to print and meant for informational purpose only. Herz Armaturen reserves the right to modify and change products as well as its technical specifications and/or its function according to technological progress and requirements. All diagrams are indicative in nature and do not to be complete. It is understood that all images of Herz products are symbolic representations and therefore may visually differ from the actual product. Colours may differ due to printing technology used. In case of any further questions don't hesitate to contact your closest HERZ Branch-Office.