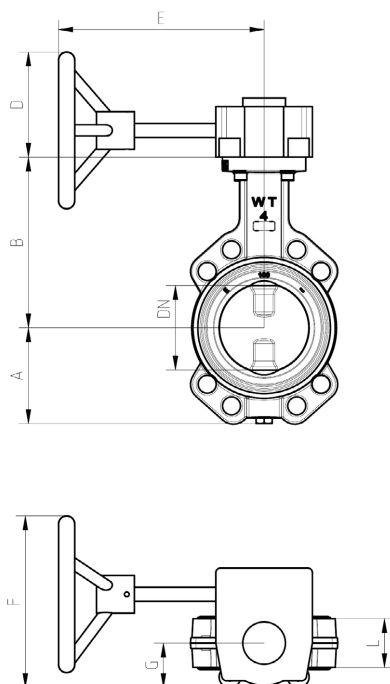


# ☒ Wafer type ZF with gearbox

Dimensions in mm



Article number	DN	PN6	PN10	PN16	A	B	L	D	E	F	G	Weight (kg)	Torque (Nm)
1 4219 61	50	+	+	+	68	125	43	63	217	183	47.5	8.3	20
1 4219 62	65	+	+	+	80	150	46	63	217	183	47.5	8.5	20
1 4219 63	80	+	+	+	87	157	46	63	217	183	47.5	9.2	25
1 4219 64	100	+	+	+	102	182	52	63	217	183	47.5	10.8	50
1 4219 65	125	+	+	+	120	201	56	63	217	183	47.5	12.8	50
1 4219 66	150	+	+	+	132	214	56	63	217	183	47.5	14.6	90
1 4219 67	200	-	+	+	167	245	60	63	217	183	47.5	19.7	150
1 4219 68	250	+	+	-	197	283	68	63	217	226	65	29.1	250
1 4219 69	300	+	+	-	222	308	78	63	217	226	65	39.4	350

## ☒ Materials

Housing	GG, GJL-250/JL1040, according to EN1561
Disc	stainless steel 1.4408
Spindle	stainless steel ASTM-A276 / Type 316
Lever	DN50-150 steel, ST14.03
Lever	DN200-300 steel, S235 DIN2458/1626
Housing	sealing EPDM according to ISO 1691
O-Ring	EPDM according to ISO 1691
Flange	according to EN1092-2

The housing is painted blue (RAL 5000).

The handwheel is supplied in the delivery and must be fixed by means of a packed bolts.

## ☒ Application field

Suitable for fluids in building services, cold water systems, hot water saystems, etc. Ethylene and propylene glycol, in a mixing ratio of 25 - 50 % with water is permitted for usage.

All specifications and information within this document are reflecting the information available at the time of going to print and meant for informational purpose only. Herz Armaturen reserves the right to modify and change products as well as its technical specifications and/or it function according to technological progress and requirements. All diagrams are indicative in nature and do not to be complete. It is understood that all images of Herz products are symbolic representations and therefore may visually differ from the actual product. Colours may differ due to printing technology used. In case of any further questions don't hesitate to contact your closest HERZ Branch-Office.