



Technical data

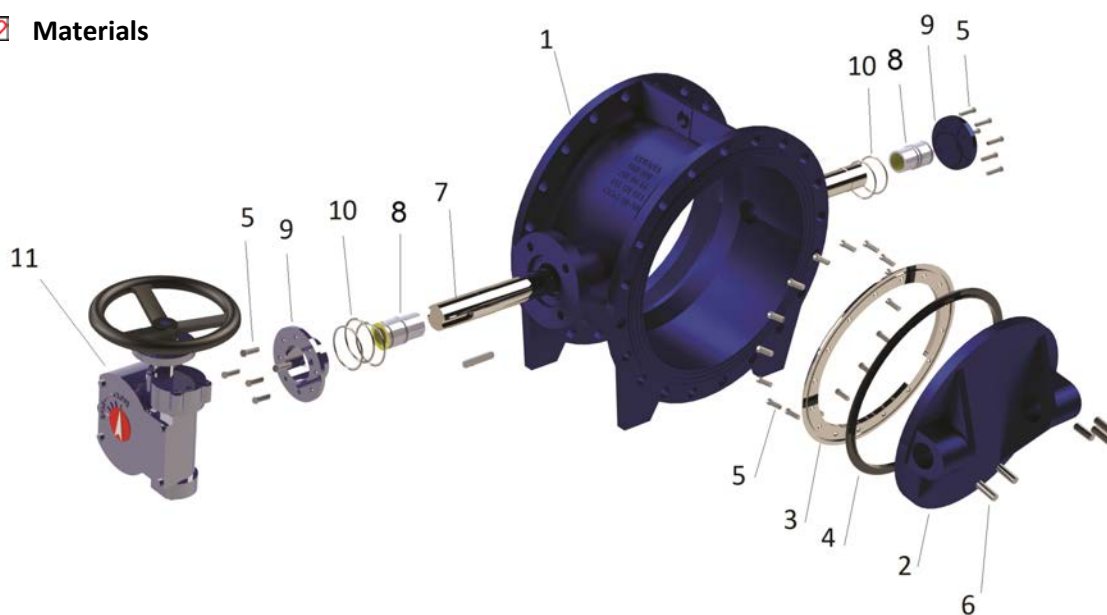
Nominal pressure	: 16/25 bar
Min. operating temperature	: -10°C
Max. operating temperature	: +90°C
Design	: EN593
Face to Face	: EN558-1
Flanged Connection	: EN1092-2
Casting standard	: EN1563: 2011(EN)

Product Description

- Double Eccentric Design.
- Valve body and disc are designed to provide minimum resistance to flow.
- AISI 420 Stainless Steel Stems with clamp connection
- Fusion bonded epoxy coating for the body.
- High corrosion resistance and high strength bronze bush
- Robust welded (AISI 308-316 LSI) and high precision machined stainless steel surface
- The Eccentric design reduces the pressure on the rubber sealing ring and ensures continuous contact between the sealing ring and the body site.
- Seat surface is made of hard chrome or AISI 316 stainless steel material. The seat surface is resistant to abrasion and corrosion.
- The sealing ring can be easily changed without disassembling the disc.
- The shaft seal is made of bronze and self-lubricating bushings are made on the O-ring system.

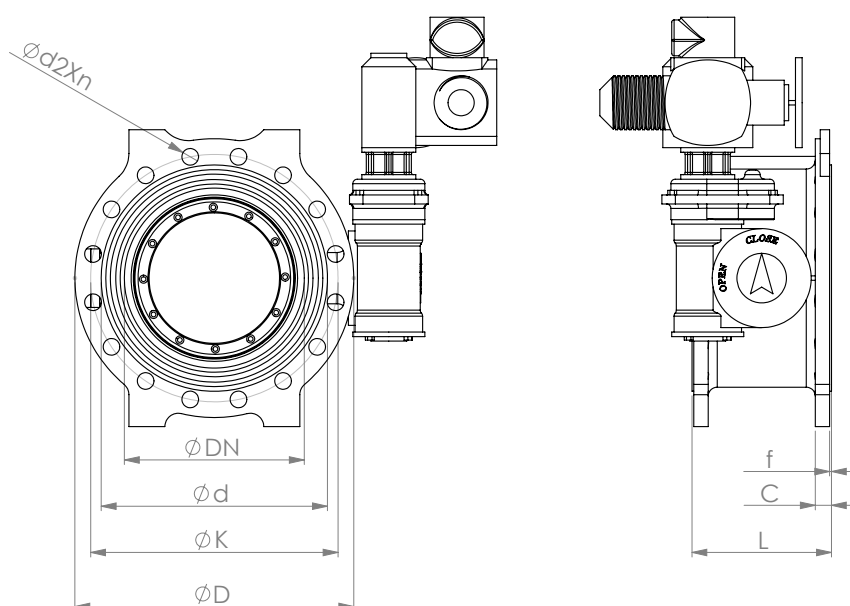
All specifications and information within this document are reflecting the information available at the time of going to print and meant for informational purpose only. Herz Armaturen reserves the right to modify and change products as well as its technical specifications and/or its function according to technological progress and requirements. All diagrams are indicative in nature and do not to be complete. It is understood that all images of Herz products are symbolic representations and therefore may visually differ from the actual product. Colours may differ due to printing technology used. In case of any further questions don't hesitate to contact your closest HERZ Branch-Office.

Materials



1	Body	Ductile iron EN-GJS 400(GGG40)
2	Disc	Ductile iron EN-GJS 400/500(GGG40/GGG50)
3	Retaining ring	Stainless Steel SS37/SS304
4	Disc Gasket	EPDM X20CR13 / 316L
5	Bolt	Stainless Steel
6	Setscrew	Stainless Steel
7	stem(Long/short)	Stainless Steel
8	Bush	Bronze
9	Cover	Ductile iron EN-GJS 500(GGG500)
10	O-ring	EPDM
11	Gearbox	-

Dimensions



All specifications and information within this document are reflecting the information available at the time of going to print and meant for informational purpose only. Herz Armaturen reserves the right to modify and change products as well as its technical specifications and/or its function according to technological progress and requirements. All diagrams are indicative in nature and do not to be complete. It is understood that all images of Herz products are symbolic representations and therefore may visually differ from the actual product. Colours may differ due to printing technology used. In case of any further questions don't hesitate to contact your closest HERZ Branch-Office.

Nominal Diameter	L	f	PN 16						PN 25					
			Model Number	ØD	ØK	Ød	C	d2xn	Model Number	ØD	ØK	Ød	C	d2xn
100	190	3	4 4219 51	220	180	156	19	19x8	5 4219 71	235	190	156	19	23x8
125	200	3	4 4219 52	250	210	184	19	19x8	5 4219 72	270	220	184	19	28x8
150	210	3	4 4219 53	285	240	211	19	23x8	5 4219 73	300	250	211	20	28x8
200	230	3	4 4219 54	340	295	266	20	23x12	5 4219 74	380	310	274	22	28x12
250	250	3	4 4219 55	405	355	319	22	28x12	5 4219 75	425	370	330	245	28x16
300	270	4	4 4219 56	460	410	370	245	28x12	5 4219 76	485	430	389	275	31x16
350	290	4	4 4219 57	520	470	429	265	28x16	5 4219 77	555	490	448	30	34x16
400	310	4	4 4219 58	580	525	480	28	31x16	5 4219 78	620	550	503	32	37x16
450	330	4	4 4219 59	640	585	548	30	31x20	5 4219 79	670	600	548	345	37x20
500	350	4	4 4219 60	715	650	609	315	34x20	5 4219 80	730	660	609	365	37x20
600	390	5	4 4219 61	840	770	720	36	37x20	5 4219 81	845	770	720	42	41x20
700	430	5	4 4219 62	910	840	794	395	37x24	5 4219 82	960	875	820	465	44x24
800	470	5	4 4219 63	1025	950	901	43	41x24	5 4219 83	1085	990	928	51	50x24
900	510	5	4 4219 64	1125	1050	1001	465	41x28	5 4219 84	1165	1090	1028	555	50x28
1000	550	5	4 4219 65	1255	1170	1112	50	44x28	5 4219 85	1320	1210	1140	60	57x28
1100	590	5	4 4219 66	1355	1270	1218	535	44x32	5 4219 86	1420	1310	1240	645	57x32
1200	630	5	4 4219 67	1485	1390	1328	57	50x32	5 4219 87	1530	1420	1350	69	57x32

Kvs Values

Size	DN100	DN150	DN200	DN250	DN300	DN350	DN400	DN450
Kvs	625	1186	2153	3363	4844	8814	11580	14490
Size	DN500	DN600	DN700	DN800	DN900	DN1000	DN1100	DN1200
Kvs	17800	25365	34540	45095	57080	70458	82466	98472

Kv Values are given in m³ / h.